

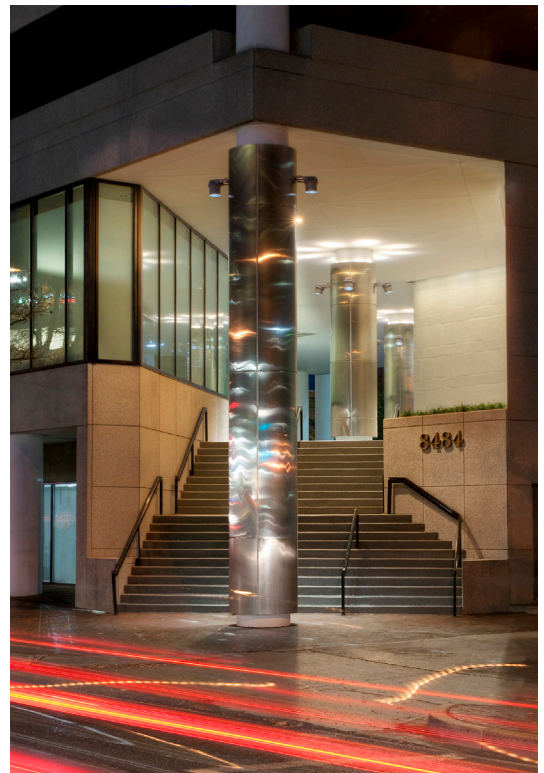
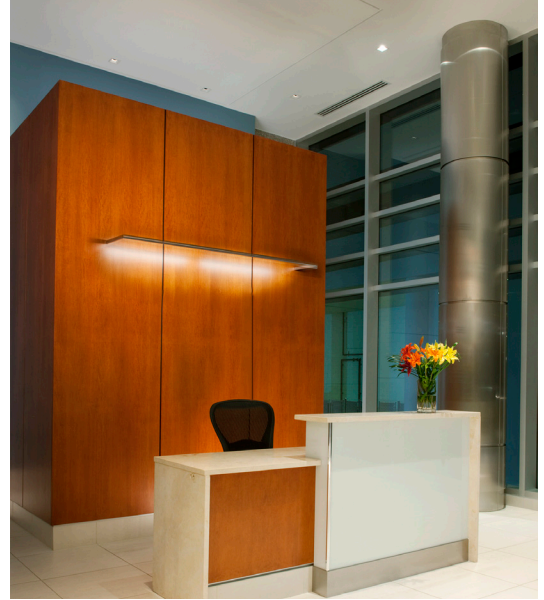


**8484 Georgia Ave**  
Silver Spring, MD  
23,751 square feet

**Commercial Office**  
Interior Architecture  
Renovation

An aged 1980s-era commercial building is transformed into striking, Class-A offices through a significant public space renovation. The property's unique spaces, including a dramatic entrance plaza and an urban park, are refurbished and unified to integrate the building into the vibrant urban center of Silver Spring. The once sterile lobby and common areas now allow views to an adjacent public park and offer warm, sophisticated wood paneling, backlit glass, comfortable seating areas and a custom reception desk. Elevator cabs, tenant lobbies and restrooms were similarly remodeled in conformance with the established design standards while the building remained fully occupied.





**8484 Georgia Ave**  
Silver Spring, MD