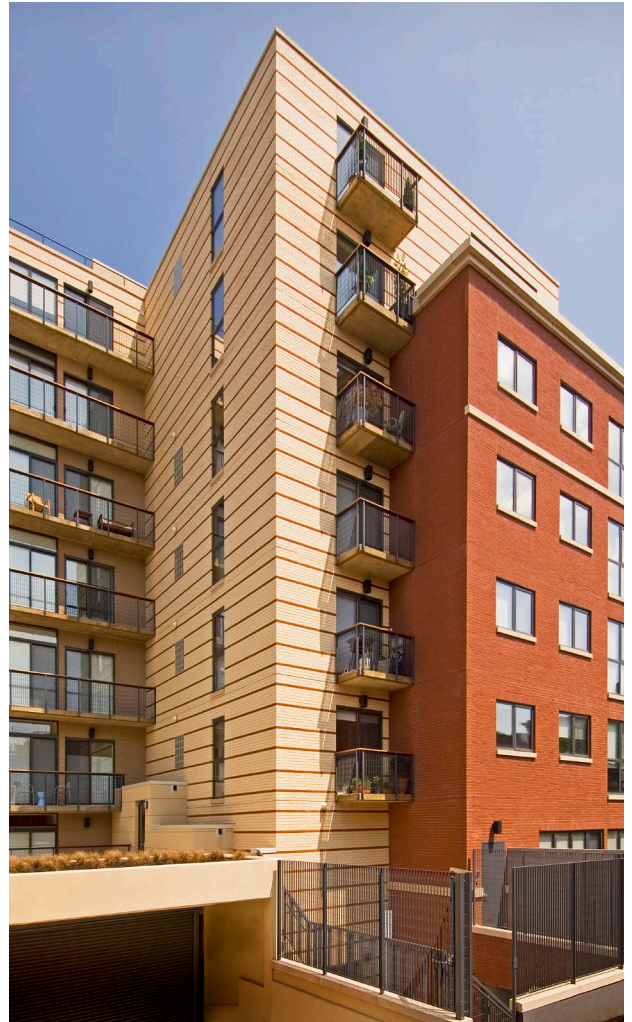


Q14 Condominiums
1401 Q St., NW
Washington, DC

65,000 square feet
Mixed Use Building
Historic District
Underground Parking

The Q14, a 28-unit luxury condominium building located at the northwest corner of 14th & Q Streets, is soon to be a landmark along the reemerging 14th Street corridor. The building, with 5 units per floor on 7 levels, is served by 2 high-speed elevators. Two levels of below grade parking accessed from the rear alley, contains up to 37 parking spaces. A terraced courtyard at the ground level will provide a visual respite from urban life, with unit balconies visually linked to this "urban oasis". A rooftop terrace serves the recreational needs of the residents, providing dramatic views of the surrounding cityscape.



Q14 Condominiums
Washington, DC