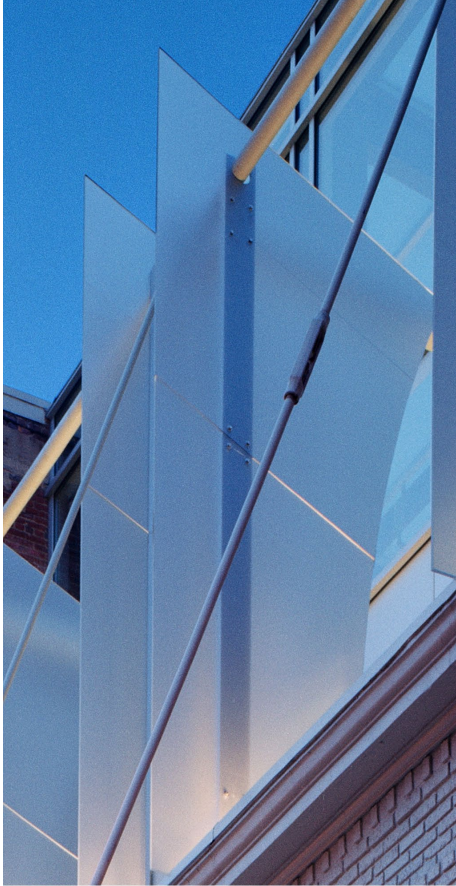


The Studio Theatre
Washington, DC
55,000 square feet

Historic Renovation
Adaptive Re-Use
Addition
210-Seat Theaters
Historic Preservation Review Board
Board of Zoning Adjustment

The original theater, a converted car showroom, was renovated to create a cultural magnet within the revitalized 14th Street corridor. Expansion into adjoining buildings allowed for two 200-seat theaters, an entrance lobby, box office, offices and classroom space. These additions respect the historic integrity of the existing structures through a visual dialogue between the original facades and its new glass-enclosed atrium. Other modern insertions include a steel-framed glass canopy and glass fins that announce the new entrance. To provide the space needed for the new theaters, second-floor slab and columns were removed and structural loads transferred to new steel beams.



The Studio Theatre
Washington, DC