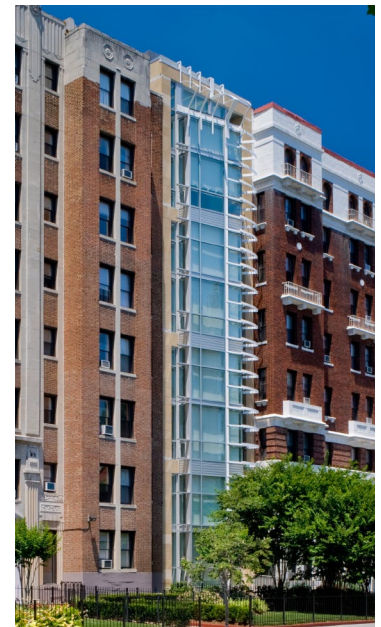


The Tapies Condominium
Washington, DC
10,000 square feet

**Multi-Family Residential
Duplex Residential Units
Urban Infill**



Located north of the White House in Washington's Sixteenth Street Historic District, this uniquely narrow residential building is striking in its appearance and reference to its historic context. Based on Victorian design tenets that define its entry and bay window, this contemporary design was deemed appropriate for this historic location by regulatory officials who considered its glass and metal facade to be complementary of neighboring buildings. The 21-foot-wide structure houses five duplex units that extend its full depth and allow for panoramic urban views from double-height living spaces. A high-speed hydraulic elevator opens directly into the living areas of each unit while internal stairs provide access to interior lofts.



The Tapies Condominium
Washington, DC