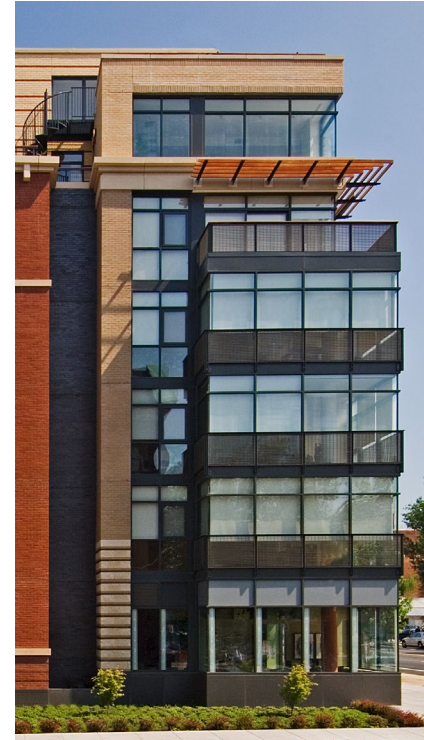


Q14 | Washington, DC



**1401 Q Street, NW,
Washington, DC 20009**

65,000 Square Feet

**Mixed-Use
Underground Parking
Historic District
Retail**

This 28-unit condominium fits comfortably into a historic context of varying architectural styles. It boldly combines colorful masonry and bays to complement the row houses to the west, while its stone-and-glass street façade responds to nearby commercial buildings. The design responds to the cornice lines and roof heights of its historic residential and commercial neighbors. Underground parking, a community room and multi-level landscaped courtyards provide amenities for residents. Duplex units on the upper levels open onto terraces high above the street, some connected by exterior spiral stairs. The lobby is visually anchored by a mahogany-framed, backlit wall, an element repeated in the common areas on each floor.

Q14 | Washington, DC

