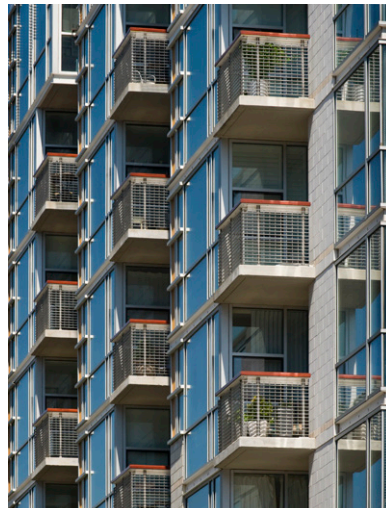


SoLo Piazza | Washington, DC



**1300 Thirteenth Street, NW
Washington, DC**

**110,000 Square Feet
77 Units**

**Multifamily Residential
Hi-Rise
Underground Parking**

A gateway to the revitalized Logan Circle residential district, this nine-story condominium is an exuberant modern design within the historic neighborhood. The façade of the 77-unit building incorporates colored masonry elements and aluminum-framed windows and balconies with custom railings to create a rich tapestry of color and form. At the rear of the site, the rectilinear building embraces a cylindrical piazza, an outdoor courtyard defined by curving glass curtain walls, projecting balconies and expressive structural elements. This open space directs sunlight into the living spaces and frames views to surrounding church spires and urban landmarks.

SoLo Piazza | Washington, DC

