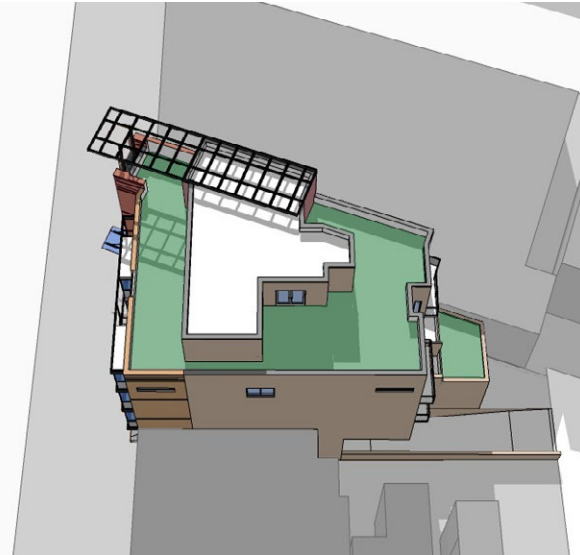


3560 Fourteenth Street, NW | Washington, DC



Mixed-Use
Multi-Family Residential
Retail
Parking
Urban Infill

Located on a site formed and defined by the unique convergence of a neighborhood grid and the expanded L'Enfant grid, the proposed mixed-use project at 3560 14th Street replaces a void in the street wall with a “wedge” that strengthens the corridor and reveals the neighborhood’s urban history. The project’s retail space affirms the city grid while a residential tower breaks the commercial street wall to distinguish the residential and retail entrances and to celebrate the neighborhood grid. This unique project packages complementary uses, addresses complex zoning and other site constraints while supporting ongoing neighborhood redevelopment.