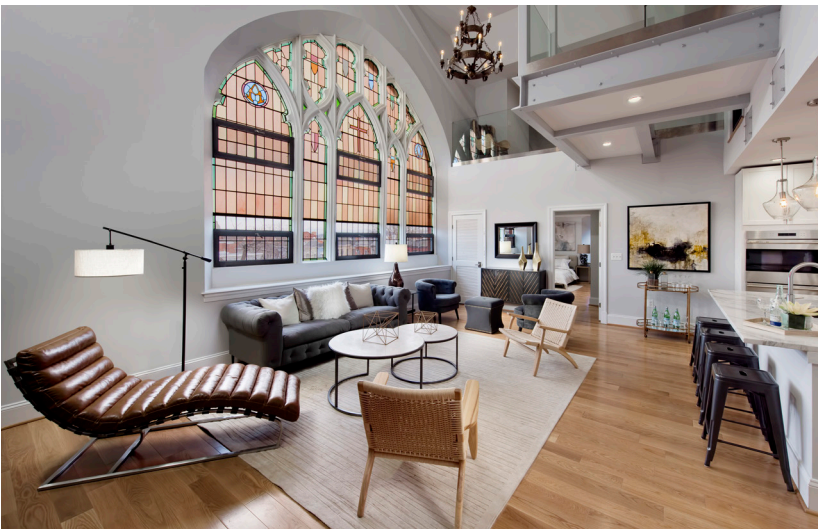


819 D Street, NE | Washington, DC



**34,693 square feet**

**Adaptive Re-use  
Multi-Family Residential  
Historic Church Conversion  
Historic Preservation Review Board**

The Sanctuary is a Gothic Revival Church that was adaptively preserved and repurposed into a contributing structure of the Capitol Hill Historic District. The project encompasses three buildings, the church and two adjacent townhouses, with a gross floor area of 34,693 square feet. Meticulous restoration and careful space planning transformed the purpose-built spaces into 30 unique residential condominiums. Each unit has a distinctive floor plan focusing on maximizing original features such as exposed brick and cast-iron columns. The church's original stained and leaded glass windows were carefully reassembled by hand, using the original glass or historically accurate reproduction glass. The interior was entirely gutted, leaving only the first and second floor framing, a restored existing stairwell and the shaped ceilings on the top floor.



819 D Street, NE | Washington, DC

